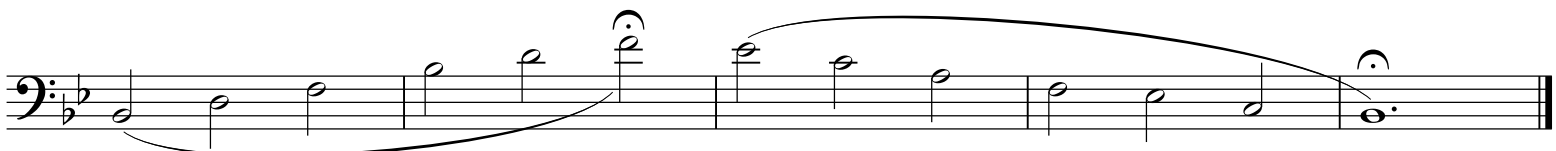
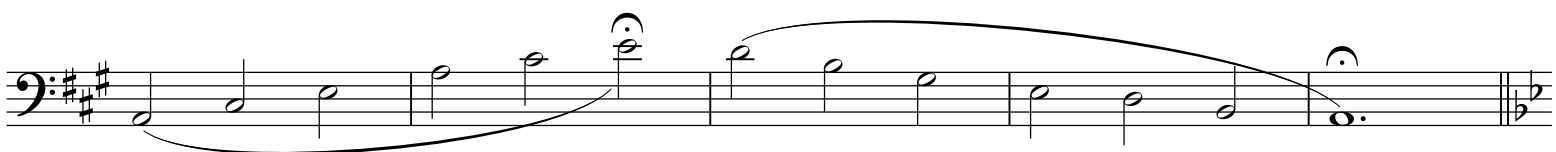
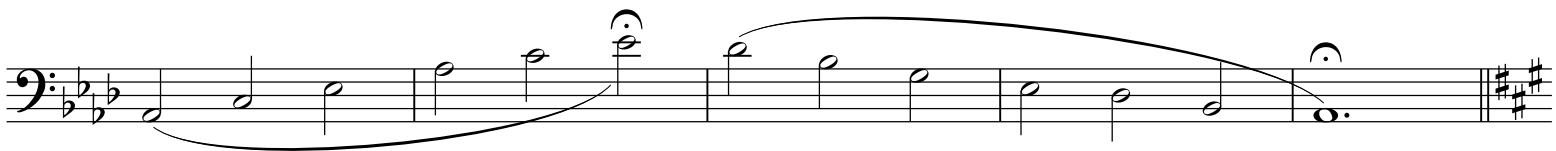
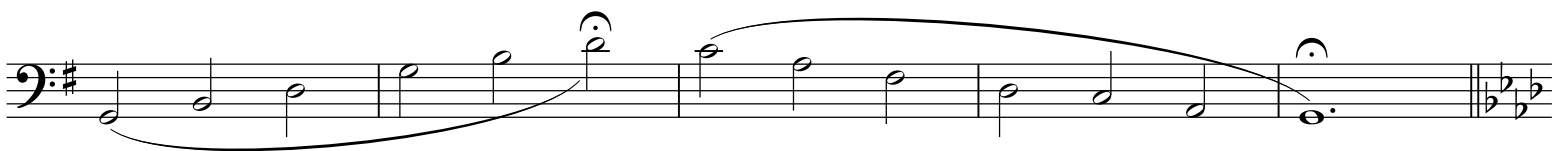
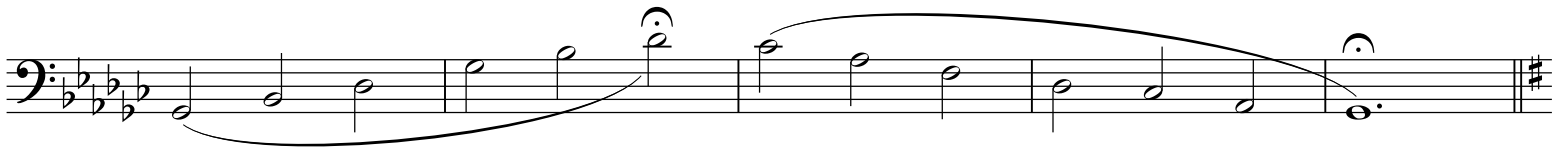
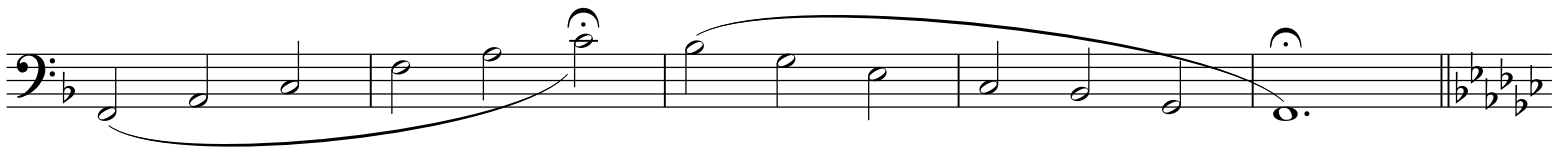
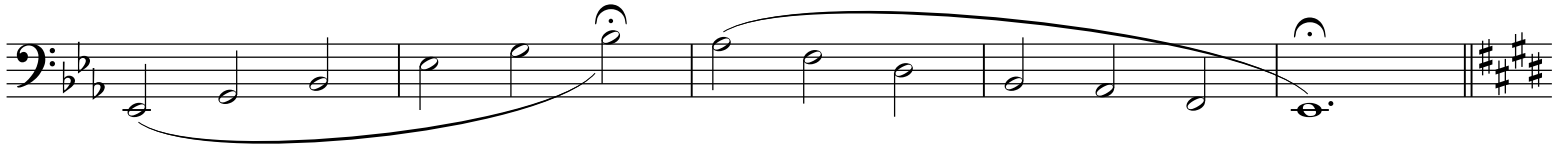
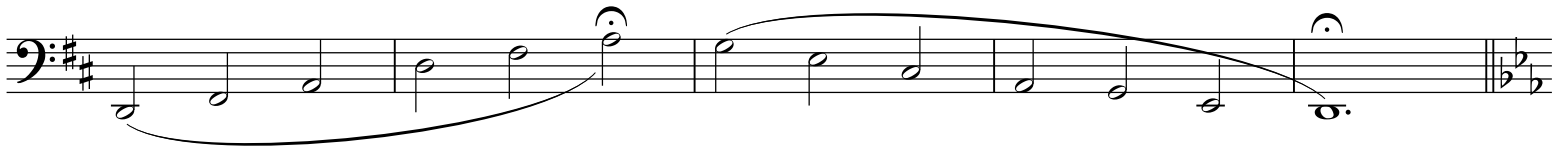


# O MADONNA, A "Vocal" Warm-Up for Tuba

Donald C. Little, Regents Professor of Tuba, donald.little@unt.edu  
College of Music, University of North Texas, www.music.unt.edu

*Play freely and expressively like a prima donna vocalist.*

The image displays a musical score for tuba, consisting of nine staves. Each staff begins with a bass clef and a 3/2 time signature. The first staff includes a dynamic marking of *mf*. The music is written in a single melodic line with a series of half notes and quarter notes, often spanning across bar lines with long, sweeping slurs. The key signature changes from two flats (B-flat and E-flat) in the first staff to one flat (B-flat) in the second, then to one sharp (F-sharp) in the third, and continues to change through various keys including two sharps (D major) and three sharps (F major) before returning to two flats in the final staff. The notation includes various articulations such as slurs and accents, and concludes with double bar lines and repeat signs.



*Experiment with these sequences by starting in different keys and/or octaves and moving up or down in range.*